



Letter from the EGLR President

Greetings,

For our second newsletter of 2014 I would like to acknowledge our region’s sad loss and also a few of our great achievements. First, we lost a devoted EGLR member, Dr. Carolyn Merry, in a tragic traffic accident in early June. On page 3 I share my thoughts about my interactions with Carolyn over the past few years.

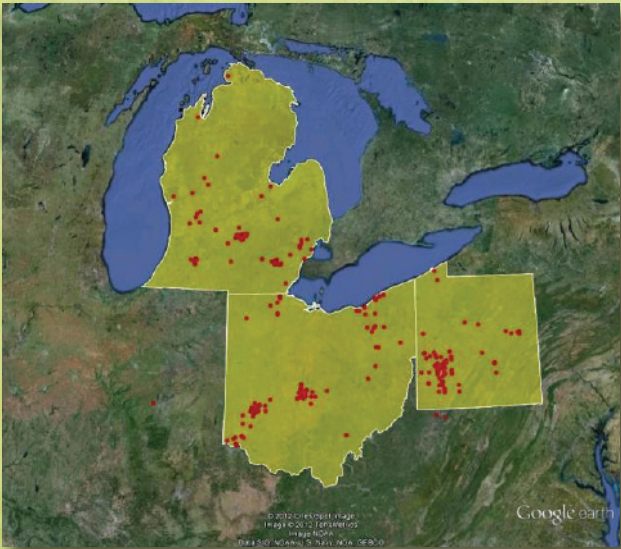
In June we gained a new Regional Director, Jason Heywood. Some of you may be familiar with Jason as he has volunteered his time to the EGLR Board in years past, including being an alumni of the EGLR Past President’s. Please see Jason’s current bio in this issue. Two of our members were interviewed for the ASPRS PE&RS Journal in March (Jeff Lovin, EGLR VP ‘14) and in April (Karen Carter, EGLR President ‘14) and one of our members, Jim Peters (EGLR President ‘13) is the author of a new monthly PE&RS Journal technical column (Behind the Scenes). The column debuts in the PE&RS July issue.

This newsletter launches spot-light sections detailing projects from companies, academia and government agencies that our members represent within the Eastern Great Lakes Region. In this issue we focus on EGLR Treasurer George Leshkevich and his research at the NOAA Great Lakes Environmental Research Laboratory. We also spotlight Woolpert as they invest in tech and partnerships to offer more than just a product to their clients. We invite any company wishing to spot-light projects in our 3rd Quarter (late September publishing) and 4th Quarter (December) newsletters to email your intentions and article to asprs.eglrl@gmail.com.

This coming fall semester our Board will be working closely with our Student Liason, Steven Ostrowski to gain at least two new EGLR Student Chapters. Student Chapters within ASPRS provide a great avenue for students in the geospatial sciences for leadership opportunities and networking with professionals in this field.

For the past ten years all of our region’s meetings (technical or social) have been open to anyone interested in the Geosciences, members and nonmembers alike. We as a region have consistently used social media to; engage, instruct and elevate awareness of our meetings and our society. Every meeting is meant to; recruit, teach and inspire by showcasing or highlighting work, project demonstrations and/or presentations of motivated and progressive studies by innovative people in our region. This fall Woolpert will be hosting the EGLR Fall Technical Meeting on Friday October 3, 2014 at their headquarters’ office in Dayton, Ohio.

As I wrap up this Region news update I would like to share some knowledge gained at the ASPRS Annual Conference held in Louisville



In this Issue

Letter from the EGLR President	1
2014 ASPRS - EGLR Board Members	2
New Regional Director	2
Join the EGLR Board of Directors	2
Thoughts and Remembrance	3
Great Lakes Ice Cover 2014 Highlights	4
EGLR 2014 Fall Technical Meeting	6
Woolpert invests in tech and partnerships	7
Events Calendar	7

this past March. I attended the Region’s Board meeting with representatives from a majority of all 16 ASPRS Regions. I found out that the EGLR is one of the few regions of ASPRS that is consistently showing an increase in meeting attendance. I can proudly say that increase can be attributed to all of the hard work, dedication, inspiration and sacrifice that all of you make to ensure that our region maintains the highest level of excellence.

Thank you,
Karen Carter
EGLR President 2014

2014 ASPRS - EGLR Board Members



President
Karen Carter



Past Pres./Media Editor - Jim Peters



Vice President
Jeff Lovin



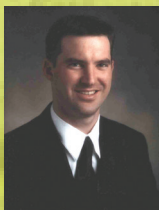
Secretary/Treasurer
George Leshkevich



National Director
Dr. Srinivas Dharmapuri



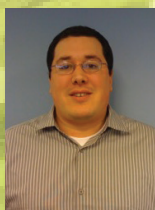
Chair - EGLR SAC
Steven Ostrowski



Regional Director
Jason Heywood



Regional Director
Michael Joos



Regional Director
David Alvarez

**EGLR Board Welcomes New Regional Director
Jason D. Heywood**



Jason is an ASPRS Certified Photogrammetrist, Florida Licensed Professional Surveyor & Mapper, Virginia Licensed Photogrammetric Surveyor and a South Carolina Licensed Professional Photogrammetric Surveyor. He has been a Project Manager with Aerocon Photogrammetric Services, Inc. since 2006, having previously been employed by Air-Land Surveys since 1995.

He earned his BA degree at Staffordshire University in England in 1992 and his MS degree at Eastern Michigan University in 1994. He is a member of several professional organizations and is a Past-President of the Eastern Great Lakes Region of ASPRS.

Join the EGLR Board of Directors

Within our region each year, we nominate and elect a new Vice President to the EGLR Board of Directors. The VP position becomes a 3-year commitment as you advance to President and then to Past President. Request for nominations will be emailed in November for the Vice President position.

Serving on the Board is a chance to bring your ideas to improve the Region and educate our members at the Region and National levels of ASPRS.



Thoughts and Remembrance

About an Eastern Great Lakes Region member: Dr. Carolyn Merry

Eastern Great Lakes Region board and its members will deeply miss Carolyn as she touched all of our lives in the most positive ways. She was an enormous treasure and a source of inspiration on a deeply personal level to all of us.

Carolyn Merry was many things to many people; she was a daughter, sister, wife, aunt, student, colleague, teacher, mentor and most of all friend. But for Eastern Great Lakes Region members she will always be remembered fondly as “our Carolyn”.



Our members have attended ASPRS and EGLR conferences, workshops and meetings with Carolyn where she was an active member since 1975. She served in many elected and appointed positions in professional organizations including serving as President of ASPRS.

Carolyn was among our regions' members that are pioneers, legends, innovators and world renown in their fields.

I had the good fortune of first meeting Carolyn a few years ago at a region technical meeting held in Columbus, Ohio at The Ohio State University. I really liked her spirit, she was quietly impressive, and a gentle but composed force. I could not remember her name so I kept asking Jim Peters about her, asking if she was going to our next meeting and if she was presenting. I had the chance to chat with her at the Baltimore ASPRS conference at an impromptu small gathering of our region members where she was warm, friendly and talkative; she was a delight to be with.

When she retired from The Ohio State University I had the opportunity to voice my admiration for her by telling her that she is a delightful jewel and a true treasure to our region and I would miss seeing her at our events. Then in March at the Louisville, Kentucky ASPRS conference we had a few private moments where she took the time to ask if I was ok and how I was fairing with my job search and even asked what I wanted to do with my life. Her concern for my well being was touching and I opened up to her with some honest truths.



I will always cherish the talks and encounters that I had with Carolyn and I am happy that I told her how treasured she is. She was approachable and genuine with a kind and gentle spirit.

We the board and members of Eastern Great Lakes Region are immensely proud of all of Carolyn's accomplishments, but words are insufficient to express how much she will be missed.

Karen Carter
President EGLR

Great Lakes Ice Cover 2014 Highlights

by George Leshkevich, Physical Scientist
NOAA - Great Lakes Environmental Research Laboratory



Cason J. Callaway in ice

In sharp contrast to recent winters, the 2013-14 winter developed into one of the most severe ice seasons on the Great Lakes in the past 40 years of record and has had economic, ecological, and societal effects. The ice season started early in 2013 (end of November vs. normally mid-December) and saw a large amount of ice cover early in the season. For example, the 40-year average ice cover on the Great Lakes for February is 32.3%, while the February 2014 average was 77.6%. This winter saw the second highest amount of ice cover on the Great Lakes (92.5%) since 1973, only following 94.7% in 1979. Actually, this winter saw two maxima in ice cover (88.4% on Feb. 12 and 13 and 92.5% on March 6) for the first time since 1996. Four of the Great Lakes (Superior, Michigan, Huron, Erie) became 90% or more ice covered for the first time since 1994. Lake Michigan reached 93.3% ice cover on March 8, 2014, setting a new record for that lake.

The thick and extensive ice cover on the lakes caused delays in the shipping of fuel oil and raw materials that in turn affected industries including the steel producing industry. Ore carriers as well as ice breakers suffered damage to hull plating, engines, and steering gear. Although the locks at Sault Ste. Marie opened on March 25, commercial vessels could not transit into or out of Lake Superior until April 4.

On the other hand, some species of fish, such as the Whitefish, need a stable ice cover over spawning beds that helps protect them from winter storms. Fruit growing areas along the lake shore benefited from cooler air temperatures lasting long into the spring, reducing the possibility of killing frost on blossoms that may otherwise have bloomed earlier in the spring. In addition, owing to extensive and prolonged ice cover, reduced evaporation from the lakes should have a positive affect on water levels. Projections are for increased water levels on Lakes Michigan and Huron, a slight increase on Lake Superior, and little change on Lake Erie.

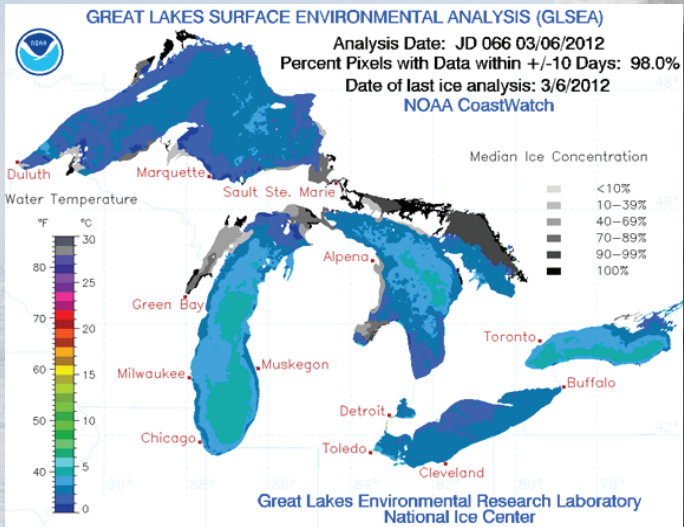


Brash Ice

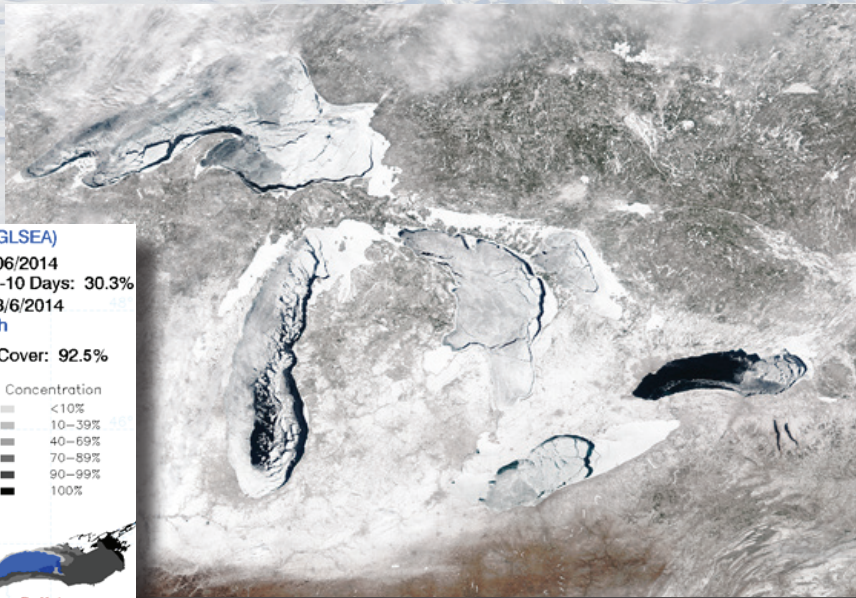
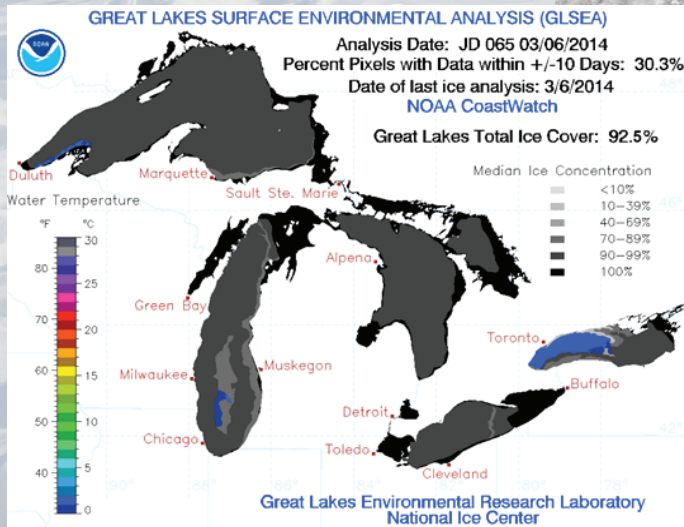


140 Class icebreaker in Duluth Harbor

Below are ice charts and satellite imagery comparing ice cover on the Great Lakes on March 6, 2012 and March 6, 2014. The GLSEA Chart maps ice concentration in 6 concentration categories (shades of gray) and surface water temperature in areas of open water. For 2012, the Great Lakes are relatively clear of ice (except a few locations) thus showing the water temperature variations. The 2014 GLSEA shows the ice concentration categories on the Great Lakes with only a few locations where there is open water.



MODIS True Color Image- March 6, 2012



MODIS True Color Image- March 6, 2014

Announcement

EGLR-ASPRS 2014 Fall Technical Meeting Hosted by Woolpert (Dayton, Ohio) on Friday October 3, 2014

**The meeting is being planned to be an event
you will not want to miss**

**Attend technical presentations
Earn PDH Credits for the day
Networking opportunities
Meet EGLR Board Members**

Put us on your calendar!

**If you are not a member, please join us for the day and see
why it is a great professional opportunity to join ASPRS.**

Woolpert invests in tech and partnerships to offer more than just a product

At Woolpert, geospatial is more than just collecting data and building information systems. It's fitting puzzle pieces together to see the bigger picture, and it's providing our clients with more accurate information to operate more efficiently. So, instead of getting a geospatial "product," clients get new ways to apply geospatial technologies that tackle their greatest business challenges.

Some of these puzzle pieces are the partnerships we enter into and our ability to stay abreast or even ahead of new technology that is emerging in the market. Right now for us, one piece we've added is our recent partnership with Google.

As an authorized Google Enterprise partner, we can leverage Google's cloud infrastructure and expansive imagery dataset to add another highly functional tool to our clients' mapping and geospatial toolbox. Since we understand how Google geo solutions integrate with our clients' existing GIS solutions, we saw an opportunity to help them efficiently organize and distribute their geospatial information as well as offer access to a cloud-based infrastructure, which helps them save on intangible costs associated with data storage and access.

Whether a client's project is a simple traditional data collect or GIS implementation or it requires more advanced processes to support natural resource man-

Events Calendar

October 3, 2014

EGLR Fall Tech Meeting
Dayton, Ohio

October 21 - 22, 2014

**ASPRS UAS Technical
Demonstration and Symposium**
Reno, Nevada

November 17 - 20, 2014

Pecora 19
**"Sustaining Land Imaging:
UAS to Satellites"**
in conjunction with
The Joint Symposium of
ISPRS Technical Commission I
and IAG Commission 4
Denver, Colorado USA

May 4 - 8, 2015

ASPRS 2015 Annual Conference
Tampa, Florida



Share with the EGLR

If you have news that you would like to share with the region please contact the newsletter editor Jim Peters – at asprs.egl@gmail.com or any of the region board members. Thank you for your support of the Region!

Become a Member of ASPRS



Information on becoming a member of the ASPRS and all of the great benefits associated with membership can be found on the National webpage – www.ASPRS.org